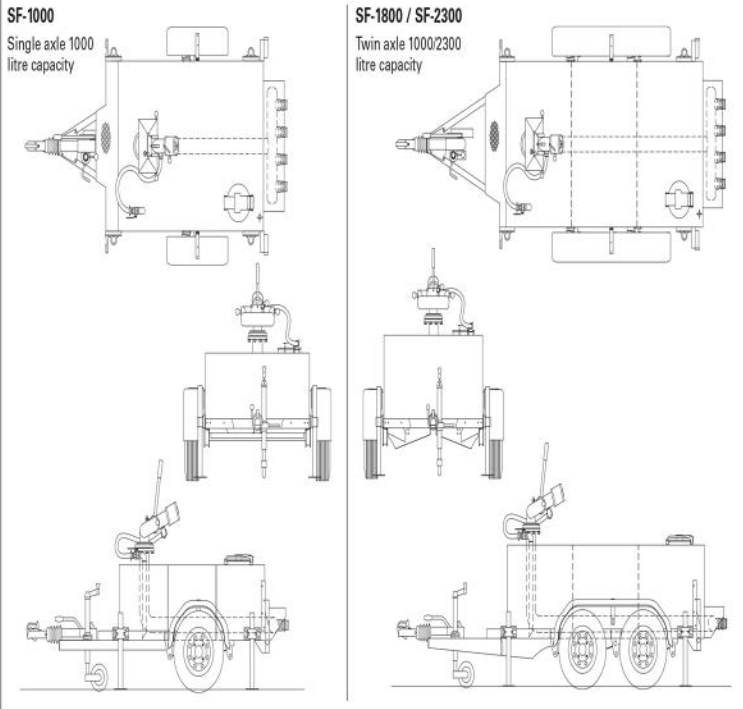
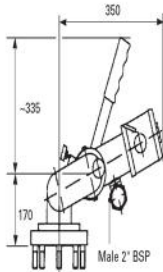




RAFT Rapid response Foam Trailer



Trailer dimensions			
Trailer capacity	1000 litre	1800 litre	2300 litre
Height (incl. monitor)	91.6 cm	106.6 cm	121.6 cm
Width	174.5 cm	177.6 cm	177.6 cm
Length	320 cm	418 cm	418 cm
Weight Unladen	450Kg	660 Kg	670Kg
Weight Laden	1450kg (1000L)	2450 Kg	2971kg



Technical Data		
FJM-S Series Built-in inductor	80	100
Water capacity	3,700 l/min	6,000 l/min
Foam capacity	170 l/min	320 l/min
Elevation	-45° / +90°	-45° / +90°
Suction connection	1 1/2" BSP male	2" BSP male
Weight	15 kg / 33 lbs	24 kg / 53 lbs

Full FJM-MAN datasheets are available. Please call for details

(Note: weight may vary according to specific gravity of foam concentrate)

Custom Build Your SKUM RAFT

RAFT tank capacity

- 1000 litres single axle
- 1800 litres twin axle
- 2300 litres twin axle

Hose baskets

- 1000 litres -carry up to 4 hoses
- 1800 litres -carry up to 12 hoses
- 2300 litres -on application

SKUM monitor

FJM-MAN S (self inducing)

- FJM 100S
- FJM 80S

Inductors

- Maximum of 2 inductors per trailer
- 200 or 400 litres per minute capacity
- MLR branch pipes to match chosen inductors

Sight glass

- Accurately displays tank fill level

All International



Hose coupling types are available, please call for more details.

SKUM recommend



Viking Type 3 Fire Hose for optimum effectiveness.

Distributed by:



tyco
Fire Suppression
& Building Products

TYFENRAFT: 02/09

Model:
SF-1000
SF-1800
SF-2300

Rapid response Foam Trailers & Fire Fighting Equipment

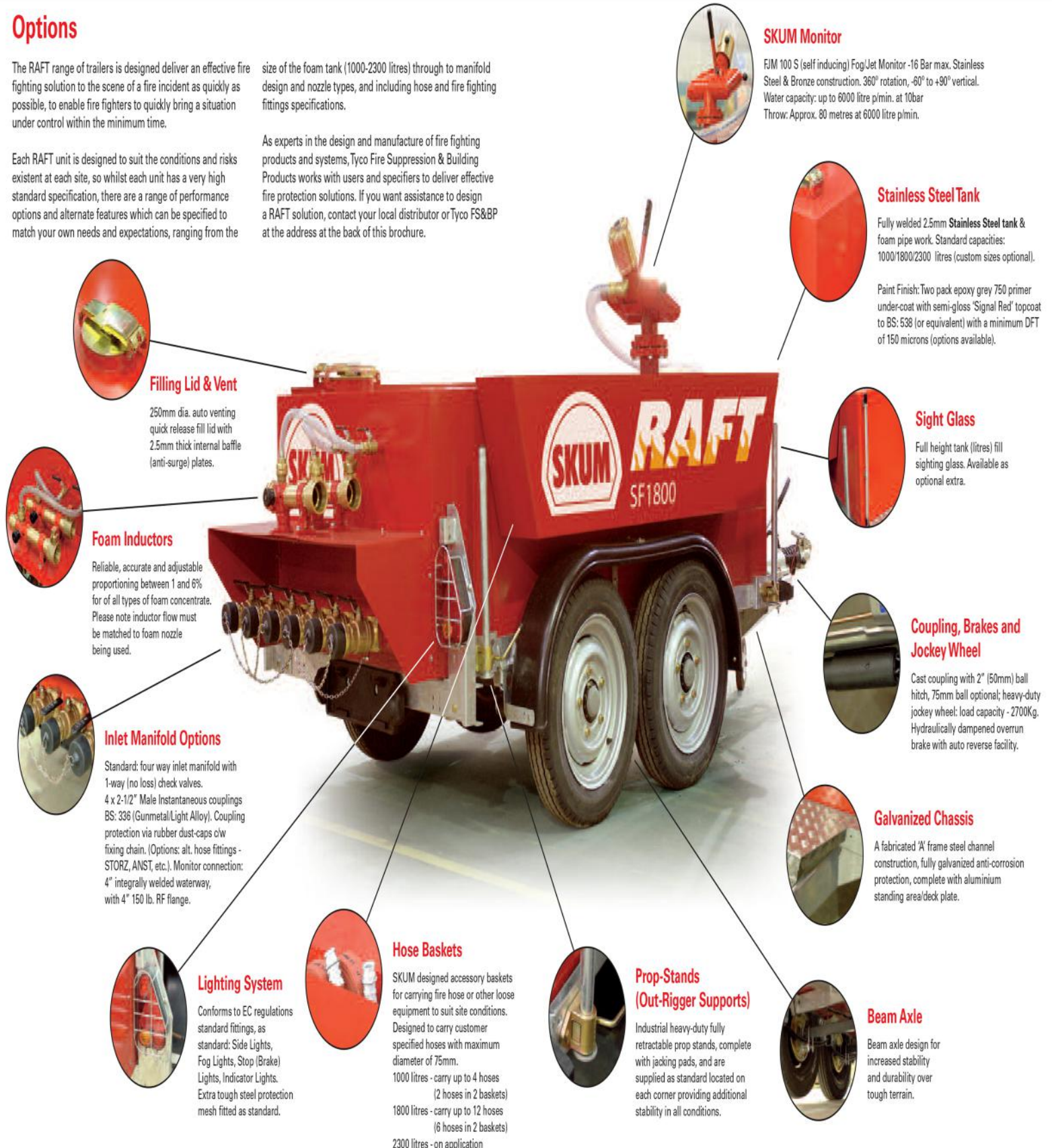
Options

The RAFT range of trailers is designed deliver an effective fire fighting solution to the scene of a fire incident as quickly as possible, to enable fire fighters to quickly bring a situation under control within the minimum time.

Each RAFT unit is designed to suit the conditions and risks existent at each site, so whilst each unit has a very high standard specification, there are a range of performance options and alternate features which can be specified to match your own needs and expectations, ranging from the

size of the foam tank (1000-2300 litres) through to manifold design and nozzle types, and including hose and fire fighting fittings specifications.

As experts in the design and manufacture of fire fighting products and systems, Tyco Fire Suppression & Building Products works with users and specifiers to deliver effective fire protection solutions. If you want assistance to design a RAFT solution, contact your local distributor or Tyco FS&BP at the address at the back of this brochure.



Filling Lid & Vent

250mm dia. auto venting quick release fill lid with 2.5mm thick internal baffle (anti-surge) plates.



Foam Inductors

Reliable, accurate and adjustable proportioning between 1 and 6% for all types of foam concentrate. Please note inductor flow must be matched to foam nozzle being used.



Inlet Manifold Options

Standard: four way inlet manifold with 1-way (no loss) check valves.
4 x 2-1/2" Male Instantaneous couplings BS: 336 (Gunmetal/Light Alloy). Coupling protection via rubber dust-caps c/w fixing chain. (Options: alt. hose fittings - STORZ, ANST, etc.). Monitor connection: 4" integrally welded waterway, with 4" 150 lb. RF flange.



Lighting System

Conforms to EC regulations standard fittings, as standard: Side Lights, Fog Lights, Stop (Brake) Lights, Indicator Lights. Extra tough steel protection mesh fitted as standard.



Hose Baskets

SKUM designed accessory baskets for carrying fire hose or other loose equipment to suit site conditions. Designed to carry customer specified hoses with maximum diameter of 75mm.
1000 litres - carry up to 4 hoses (2 hoses in 2 baskets)
1800 litres - carry up to 12 hoses (6 hoses in 2 baskets)
2300 litres - on application



SKUM Monitor

FIM 100 S (self inducing) Fog/Jet Monitor -16 Bar max. Stainless Steel & Bronze construction. 360° rotation, -60° to +90° vertical. Water capacity: up to 6000 litre p/min. at 10bar
Throw: Approx. 80 metres at 6000 litre p/min.



Stainless Steel Tank

Fully welded 2.5mm Stainless Steel tank & foam pipe work. Standard capacities: 1000/1800/2300 litres (custom sizes optional).
Paint Finish: Two pack epoxy grey 750 primer under-coat with semi-gloss 'Signal Red' topcoat to BS: 538 (or equivalent) with a minimum DFT of 150 microns (options available).



Sight Glass

Full height tank (litres) fill sighting glass. Available as optional extra.



Coupling, Brakes and Jockey Wheel

Cast coupling with 2" (50mm) ball hitch, 75mm ball optional; heavy-duty jockey wheel: load capacity - 2700Kg. Hydraulically dampened overrun brake with auto reverse facility.



Galvanized Chassis

A fabricated 'A' frame steel channel construction, fully galvanized anti-corrosion protection, complete with aluminium standing area/deck plate.



Prop-Stands (Out-Rigger Supports)

Industrial heavy-duty fully retractable prop stands, complete with jacking pads, and are supplied as standard located on each corner providing additional stability in all conditions.



Beam Axle

Beam axle design for increased stability and durability over tough terrain.